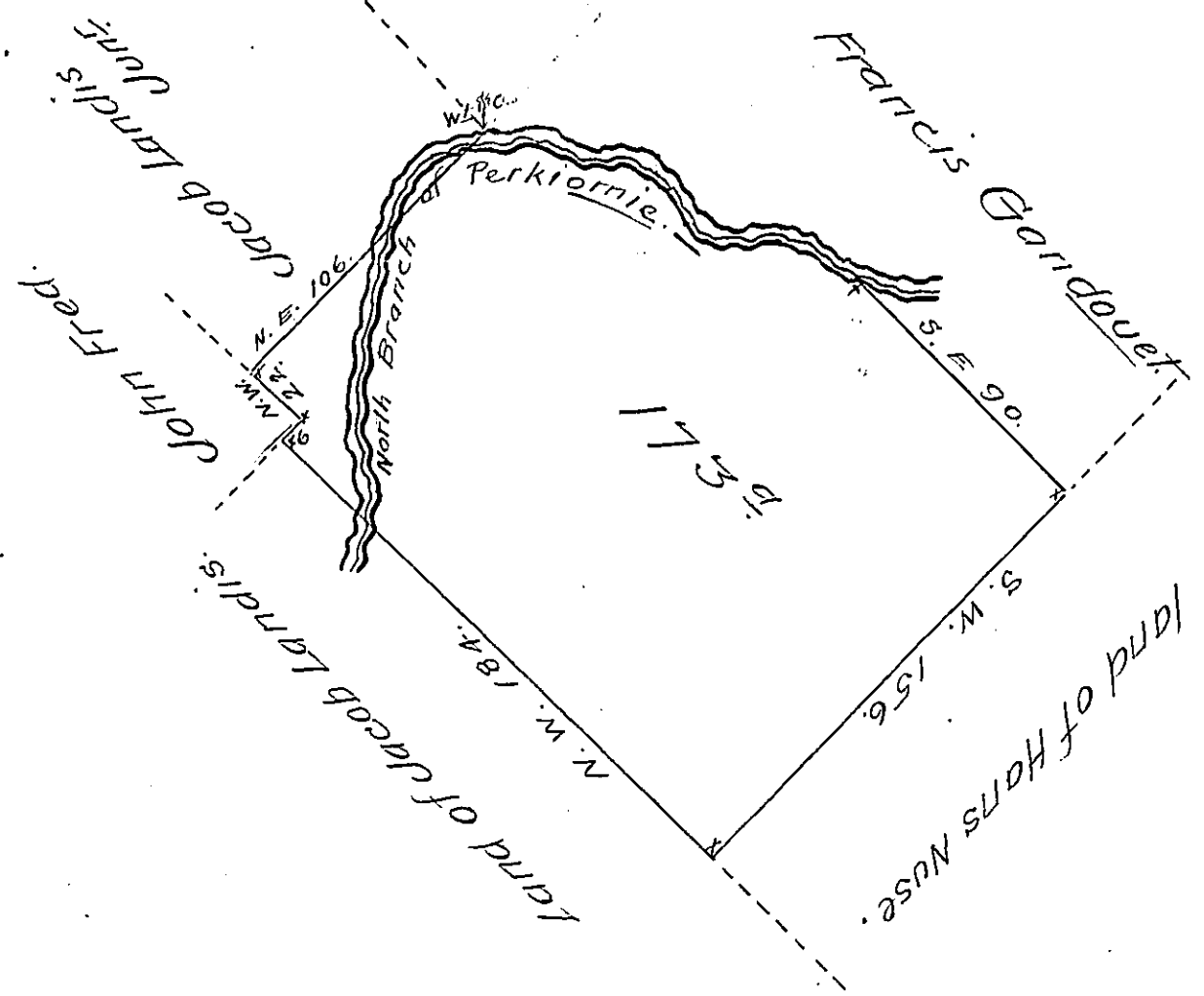


FORM No. 1.



Surveyed on the Thirteenth day of Feb^{ry}. 1734 To John Henry Snider a Tract of land Situate in the Township of Salford in the County of Philada. Beginning at a post on the East Bank of a Branch of Perkiomine-called the North Branch thence by land of Francis Gandevill South East Ninety perches to a white Oak thence by land of Hans Nuse South West one hundred and fifty six perches to a post in the Line of Jacob Landis's land thence by the same North West one hundred and Eighty four perches to a post in the line of John Freds land thence by the same North East Six perches to a white Oak ^{a corner} of sd. Freds land thence by the same North West Twenty two perches to a post thence by Vacant Land North East one hundred and Six perches to a white Oak a corner of sd. Gandouit's land Standing on the West side of the said Branch South Seventy Degrees East across ye same six perches to ye East side of ye sd. Branch thence up ye several courses of ye same to ye place of Beginning Containing one hundred & Seventy three acres with usual allowance ~ Nich^s. Scull
By Warr^t dated the 16th. of Ap. 1735 for 150⁰.

IN TESTIMONY that the above is a copy of the original remaining on file in the Department of Internal Affairs of Pennsylvania, made conformably to an Act of Assembly approved the 16th day of February, 1833, I have hereunto set my Hand and caused the Seal of said Department to be affixed at Harrisburg, this twelfth day of September 1906.

Loach B. Brown
Secretary of Internal Affairs.